



SINCE 1980



PEIPING

UNIVERSAL TOOL & CUTTER GRINDER

Dedicated to the pursuance of perfect design and manufacturing concept, incorporating with the continuous innovation and breakthrough. The wide range of precision tool grinders from PEIPING provide the superior operation performance.

PEIPING PRECISION ENTERPRISE CO., LTD.



COMPANY PROFILE

PEIPING PRECISION ENTERPRISE CO., LTD. was established in 1980 and has been dedicated to the research and improvement of tool & cutter grinders all the time. All of the products have passed the quality inspection precisely. In addition, PEIPING PRECISION had got the Gold Medal winner at Geneva Invention and had many kinds of patents: No. 75717, No. 42447, No. 21204, etc. The quality of products is trustworthy by the customers.

Business Philosophy

PEIPING upholds the business philosophy of "Sustainability, Growth and Excellence". With changes in time, we have imported the advanced science and technology and developed the high technical products to meet the customers' needs. At present, PEIPING PRECISION is the main professional manufacturer of tool & cutter grinder in Taiwan. Especially, we are the only producer for drill grinder that biggest drill grinding diameter is 100mm.

Global Marketing

Our products have been sold to Europe, United States, Latin America, Asia, Middle East, Oceania, etc.

PEIPING PRECISION has the expert technique. We sincerely welcome the customers to inquire about the machinery and to have an opportunity to cooperate with us.



- Awarded Geneva Golden Prize of Invention Patent No. 21204



*Internationally
Recognized Brand*



SINCE 1980

PP-32N Universal Cutter Grinder

Features:

- The wheel heads can be rotated 360° and be installed two wheels.
Just rotate the wheel head, when need to grind the tool of different materials.
It can increase the safety & save the time for changing & repairing the grinding wheel.
- Adopts the precision 4" 6-jaw awl type chuck. It can clip stably. At the same time, it can grind the cutting edge and web thickness of drills in one set-up.
The both sides of drill angle and the edge length are equal. It could keep the accuracy of the center of drill without offset.
- Easy operation, grind fast and precisely.

The types of tools to be ground:

Drill, step drill, center drill, spotting drill, countersink cutter, tap, chamfer cutter, edge of end mill, engraving tool, sheet metal drill, round bar, etc.



Patent No.75717
Patented replacement-free unique cam.



SPECIFICATIONS

| Model No. | PP-32N |
|------------------------------|--------------------------------|
| Grinding Capacity | φ 2 mm~ φ 32 mm |
| Longitudinal Travel of Table | 115 mm |
| Horizontal Travel of Table | 135 mm |
| Rotating Angle of Wheel Head | 360° |
| Point Angle of Drill | 90°~180° |
| Size of Wheel | 125x50x31.75 mm |
| Grinding Spindle Speed | 50HZ 2900 rpm 60HZ 3500 rpm |
| Horse Power | 3/4HP (560W) |
| Net Weight / Gross Weight | 90 kgs / 122 kgs |
| Packing Size (LxWxH) | 95x55x68 cm |

Standard Accessories:

- 4" 6-jaw Awl Type Chuck-1 SET
- Chuck Handle-1 PC
- Grinding Wheel (Type:6A)-1 PC
- Grinding Wheel (Type:11A)-1 PC
- Grinding Wheel Flange-2 SETS
- Flange Wrench-1 PC
- Morse Taper Sleeve-1 PC (No.3)
- Screw Pin-6 PCS
- Work Light-1 SET
- Tools for General Use-1 SET

Optional Accessories:

- SDC Electroplated Grinding Wheel
- CBN Electroplated Grinding Wheel
- Morse Taper Sleeve (No.2)
- Work Cabinet



PP-600

Universal Tool & Cutter Grinder

Features:

- I. There are two types of wheel head: single or double.
- II. Adopt high precision cross roller guide on the table.
The table is stable and can be operated smoothly.
- III. Adopt cast iron with high toughness.
It can keep the precision of the machine in the long term.
- IV. There is a series of grinding attachments to choose from.

The types of tools to be ground include:

Drill, tap, (taper) end mill, (corner) radius end mill, turning tool, radius turning tool, chamfer cutter, countersink cutter, engraving cutter, side milling cutter, hob, reamer, gun drill, hole saw, annular cutter, slitting cutter, punch, round bar, etc.

SPECIFICATIONS

| Model No. | PP-600/PP-600-DW |
|-----------------------------------|--------------------------------|
| Longitudinal Travel of Table | 185 mm |
| Horizontal Travel of Table | 120 mm |
| Working Table Area | 520x125 mm |
| Vertical Adjustment of Wheel Head | 140 mm |
| Rotating Angle of Wheel Head | 360° |
| Size of Wheel | 125x50x31.75 mm |
| Grinding Spindle Speed | 50HZ 2900 rpm 60HZ 3500 rpm |
| Horse Power | 1/2HP (375W) |
| Net Weight / Gross Weight | 130 kgs / 165 kgs |
| Packing Size (LxWxH) | 80x75x82 cm |



Standard Accessories:

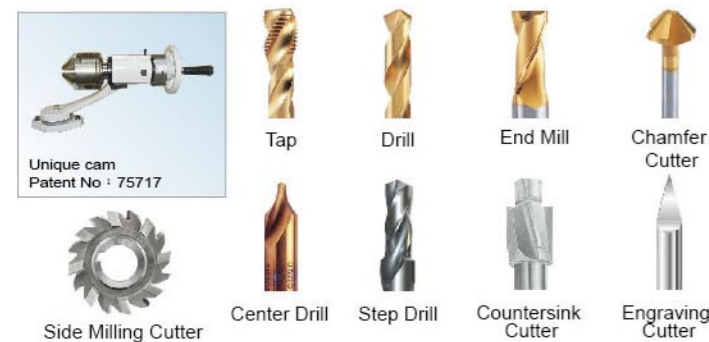
1. Grinding Wheel (Type:11A)-1 PC
2. PP-600:Grinding Wheel Flange-1 SET
PP-600-DW:Grinding Wheel Flange-2 SETS
3. Flange Wrench-1 PC
4. Work Light-1 SET
5. Tools for General Use-1 SET

Optional Accessories:

1. SDC Electroplated Grinding Wheel
2. CBN Electroplated Grinding Wheel
3. 5C Collet (Min.3mm~ Max.25mm)
4. 5C Special Collet (32mm/42mm)
5. Morse Taper Sleeve (No.2)
6. Work Cabinet

Grinding Attachment

600K/50K Tool & Cutter Grinding Attachment ϕ 2mm~ ϕ 32mm



50SA Sprial Flute/ Helical Tool Grinding Attachment ϕ 6mm~ ϕ 32mm

80SF Sprial Flute/ Helical Tool Grinding Attachment ϕ 6mm~ ϕ 25mm (could expand to 32mm)



600D/50D End Mill Grinding Attachment



50E Radius End Mill Grinding Attachment ϕ 3mm~ ϕ 25mm



PP-50

Universal Tool & Cutter Grinder

Features:

- I. The wheel heads can be rotated 360° and be installed two wheels.
Just rotate the wheel head, when need to grind the tool of different materials.
It can increase the safety & save the time for changing & repairing the grinding wheel.
- II. Adopt high precision cross roller guide on the table. The table is stable and can be operated smoothly.
- III. Adopt cast iron with high toughness. It can keep the precision of the machine in the long term.
- IV. There is a series of grinding attachments to choose from.

The types of tools to be ground include:

Drill, tap, (taper) end mill, (corner) radius end mill, turning tool, radius turning tool, chamfer cutter, countersink cutter, engraving cutter, side milling cutter, hob, reamer, gun drill, hole saw, annular cutter, slitting cutter, punch, round bar, etc.

SPECIFICATIONS

| Model No. | PP-50 |
|-----------------------------------|------------------------------------|
| Longitudinal Travel of Table | 230 mm |
| Horizontal Travel of Table | 180 mm |
| Working Table Area | 620x190 mm |
| Vertical Adjustment of Wheel Head | 120 mm |
| Rotating Angle of Wheel Head | 360°(A-axis+dual C-axis) |
| Size of Wheel | 125x50x31.75 mm 180x26x31.75 mm |
| Grinding Spindle Speed | 50HZ 2900 rpm 60HZ 3500 rpm |
| Horse Power | 3/4HP (560W) |
| Net Weight / Gross Weight | 252 kgs / 318 kgs |
| Packing Size (LxWxH) | 105x90x154 cm |

Standard Accessories:

1. Grinding Wheel (Type:5A)-1 PC
2. Grinding Wheel (Type:11A)-1 PC
3. Grinding Wheel Flange-2 SETS
4. Flange Wrench-1 PC
5. Work Light-1 SET
6. Tools for General Use-1 SET
7. Work Cabinet-1 SET

Optional Accessories:

1. SDC Electroplated Grinding Wheel
2. CBN Electroplated Grinding Wheel
3. 5C Collet (Min.3mm~ Max.25mm)
4. 5C Special Collet (32mm/42mm)
5. Morse Taper Sleeve (No.2)
6. Cast Iron Work Cabinet



Patent No. 42447
The spindle of wheel head is designed with A-axis+dual C-axis.
The motor can be rotated 360°.
Set the radial rake and relief angle easily It can increase the grinding range & function of machinery.



Grinding Attachment

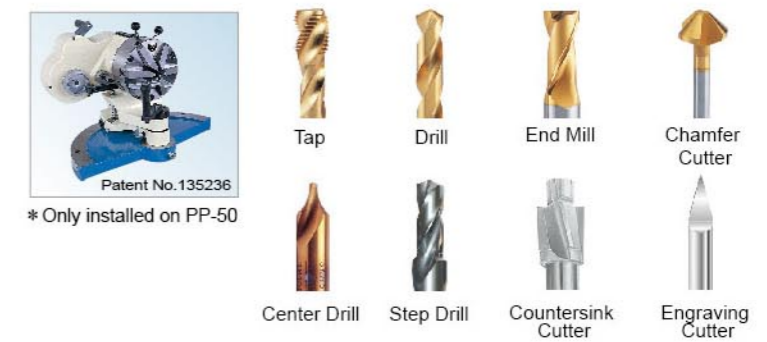
600F/50F Turning Tool Grinding Attachment



50EF Radius Turning Tool Grinding Attachment



50B Drill & Tap Grinding Attachment ϕ 2mm~ ϕ 60mm



50H Tool Grinding Attachment



PP-60N

Universal Drill & Tap Grinder

Features:

- I. There are two types of grinding wheels (5A & 12A) on wheel head of PP-60N. The end & chisel edge can be ground without changing the grinding wheel.
- II. For dressing grinding wheel, set the diamond dresser on the chuck and adjust the chuck grinding angle. The wheel motor can be adjusted 160mm vertically, 180mm horizontally and rotate 180°. It can increase the function of machinery.
- III. Adopts the precision awl type chuck. It can clip stably. At the same time, it can grind the cutting edge and web thickness of drills in one set-up. The both sides of drill angle and the edge length are equal. It could keep the accuracy of the center of drill without offset.
- IV. Easy operation, grind fast and precisely.

The types of tools to be ground:

Drill, step drill, center drill, spotting drill, countersink cutter, tap, chamfer cutter, edge of end mill, engraving tool, sheet metal drill, round bar, etc.

SPECIFICATIONS

| Model No. | PP-60N |
|-----------------------------------|------------------------------------|
| Grinding Capacity | φ 2 mm~ φ 60 mm |
| Longitudinal Travel of Table | 240 mm |
| Horizontal Travel of Table | 180 mm |
| Vertical Adjustment of Wheel Head | 160 mm |
| Clearance Angle of Drill | 0°~18° |
| Point Angle of Drill | 40°~180° |
| Size of Wheel | 180x19x31.75 mm 180x32x31.75 mm |
| Grinding Spindle Speed | 50HZ 2800 rpm 60HZ 3360 rpm |
| Horse Power | 1HP (750W) |
| Net Weight / Gross Weight | 240 kgs / 310 kgs |
| Packing Size (LxWxH) | 100x95x156 cm |

PP-60N Standard Accessories:

1. 6" 6-jaw Awl Type Chuck-1 SET
2. Chuck Handle-1 PC
3. Grinding Wheel (Type:5A)-1 PC
4. Grinding Wheel (Type:12A)-1 PC
5. Grinding Wheel Flange-1 SET
6. Flange Wrench-1 PC
7. Morse Taper Sleeve- 3 PCS (No.3,4,5)
8. Cam-5 PCS (No.4,6,8,9,A2)
9. Work Light-1 SET
10. Tools for General Use-1 SET
11. Work Cabinet-1 SET

PP-60N Optional Accessories:

1. SDC Electroplated Grinding Wheel
2. CBN Electroplated Grinding Wheel
3. Cooling System
4. Auto Cycle Motor



Patent No. 135236
Double cams. It can grind tool of 1/2/3/4/6 Flutes.



PP-80N/100N

Universal Drill & Tap Grinder

Features:

- I. For dressing grinding wheel, set the diamond dresser on the chuck and adjust the chuck grinding angle. The wheel motor can be adjusted 160mm vertically, 180mm horizontally and rotate 180°. It can increase the function of machinery.
- II. Adopts the precision awl type chuck. It can clip stably. At the same time, it can grind the cutting edge and web thickness of drills in one set-up. The both sides of drill angle and the edge length are equal. It could keep the accuracy of the center of drill without offset.
- III. Easy operation, grind fast and precisely.

The types of tools to be ground:

Drill, step drill, center drill, spotting drill, countersink cutter, tap, chamfer cutter, edge of end mill, engraving tool, sheet metal drill, round bar, etc.

SPECIFICATIONS

| Model No. | PP-80N | PP-100N |
|-----------------------------------|--------------------------------|-------------------|
| Grinding Capacity | φ 4 mm~ φ 80 mm | φ 5 mm~ φ 100 mm |
| Longitudinal Travel of Table | 240 mm | 240 mm |
| Horizontal Travel of Table | 180 mm | 180 mm |
| Vertical Adjustment of Wheel Head | 160 mm | 160 mm |
| Clearance Angle of Drill | 0°~18° | 0°~18° |
| Point Angle of Drill | 40°~180° | 40°~180° |
| Size of Wheel | 180x50x31.75 mm | 180x50x31.75 mm |
| Grinding Spindle Speed | 50HZ 2800 rpm 60HZ 3360 rpm | |
| Horse Power | 2HP (1500W) | |
| Net Weight / Gross Weight | 309 kgs / 379 kgs | 316 kgs / 386 kgs |
| Packing Size (LxWxH) | 113x100x155 cm | 113x100x155 cm |

PP-80N/100N Standard Accessories:

1. PP-80N: 7" 6-jaw Awl Type Chuck-1 SET;
PP-100N: 9" 8-jaw Awl Type Chuck-1 SET
2. Chuck Handle-1 PC
3. Grinding Wheel (Type:7A)-1 PC
4. Grinding Wheel Flange-1 SET
5. Flange Wrench-1 PC
6. Morse Taper Sleeve- 4 PCS (No.3,4,5,6)
7. Cam-5 PCS (No.4,6,8,9,A2)
8. Auto Cycle Motor-1 SET
9. Cooling System-1 SET
10. Work Light-1 SET
11. Tools for General Use-1 SET
12. Work Cabinet-1 SET



Patent No. 135236
Double cams. It can grind tool of 1/2/3/4/6 Flutes.



PP-08 / PP-08L

Gun Drill Grinder

Features:

- I. PP-08 series applies the leverage. It can grind the internal and external angle of gun drill.
- II. Adopts the precision 6-jaw awl type chuck. It can clip stably and grind the 6 faces of gun drill. Any sizes could be ground and keep the accuracy of the center of drill without offset.

SPECIFICATIONS

| Model No. | PP-08 | PP-08L |
|-----------------------------------|-------------------------------|--------------------------|
| Grinding Capacity | φ2mm~φ32mm | φ5mm~φ60mm |
| Longitudinal Travel of Table | 185mm | 230mm |
| Horizontal Travel of Table | 120mm | 180mm |
| Working Table Area | 520x125mm | 620x190mm |
| Vertical Adjustment of Wheel Head | 140mm | 120mm |
| Rotating Angle of Wheel Head | 360° | 360°(A-axis+dual C-axis) |
| Size of Wheel | 125x50x31.75mm | 125x50x31.75mm |
| Grinding Spindle Speed | 50HZ 2900 rpm ; 60HZ 3500 rpm | |
| Horse Power | 1/2HP (375W) | 3/4HP (560W) |
| Net Weight / Gross Weight | 150 kgs / 210 kgs | 293 kgs / 359 kgs |
| Packing Size (LxWxH) | 85x83x155 cm | 105x90x155 cm |

Standard Accessories:

1. PP-08: Grinding Attachment for Gun Drill (φ2mm~φ32mm)-1 SET
- PP-08L: Grinding Attachment for Gun Drill (φ5mm~φ60mm)-1 SET
2. SDC Resinoid Grinding Wheel (Type:11A2)-1 PC
3. Grinding Wheel Flange-1 SET

4. Flange Wrench-1 PC
5. Tool Fixed Block-1 PC
6. Work Light-1 SET
7. Tools for General Use-1 SET
8. Work Cabinet-1 SET



PP-11

Hole Saw & Annular Cutter Grinder

Features:

- I. The maximum grinding capacity is 100mm.
- II. Adopts the precision 6-jaw awl type chuck. It can clip stably and grind precisely.
- III. It can grind the internal and external angle of tools within minimum angle.

SPECIFICATIONS

| Model No. | PP-11 |
|-----------------------------------|--------------------------------|
| Longitudinal Travel of Table | 185mm |
| Horizontal Travel of Table | 120mm |
| Working Table Area | 520x125mm |
| Vertical Adjustment of Wheel Head | 140mm |
| Rotating Angle of Wheel Head | 360° |
| Size of Wheel | 100x30x31.75mm |
| Grinding Spindle Speed | 50HZ 2900 rpm 60HZ 3500 rpm |
| Horse Power | 1/2HP (375W) |
| Net Weight / Gross Weight | 155 kgs / 186 kgs |
| Packing Size (LxWxH) | 80x75x82 cm |

Standard Accessories:

1. SDC Electroplated Grinding Wheel (Type:6A2)-1 PC
2. Grinding Wheel Flange-1 SET
3. Flange Wrench-1 PC
4. Work Light-1 SET
5. Tools for General Use-1 SET

Optional Accessories:

1. SDC Electroplated Grinding Wheel
2. CBN Electroplated Grinding Wheel
3. Work Cabinet



PP-50S

Slitting Cutter Grinder

Features:

Suitable for round knife, slitter knife and slitting cutter.

SPECIFICATIONS

| Model No. | PP-50S |
|-----------------------------------|---|
| Longitudinal Travel of Table | 230mm |
| Horizontal Travel of Table | 180mm |
| Working Table Area | 620x190mm |
| Vertical Adjustment of Wheel Head | 120mm |
| Rotating Angle of Wheel Head | 360°(A-axis+dual C-axis) |
| Size of Wheel | 125x50x31.75mm 180x26x31.75mm 180x3x31.75mm |
| Grinding Spindle Speed | 50HZ 2900 rpm 60HZ 3500 rpm |
| Horse Power | 3/4HP (560W) |
| Net Weight / Gross Weight | 295 kgs / 361 kgs |
| Packing Size (LxWxH) | 105x90x155 cm |

Standard Accessories:

1. Grinding Wheel (Type:5A)-1 PC
2. Grinding Wheel (Type:11A)-1 PC
3. CBN Resinoid Grinding Wheel (Type:1A1R)-1 PC
4. Grinding Wheel Flange-2 SETS
5. Flange Wrench-1 PC
6. Shaft-1 PC
7. Speed Control Motor-1 SET
8. Cooling System-1 SET
9. Work Light-1 SET
10. Tools for General Use-1 SET
11. Work Cabinet-1 SET

Optional Accessories:

1. CBN Resinoid Grinding Wheel
2. Shaft (Customized Specification)
3. Oversize Grinding Attachment
4. X-axis Speed Control Motor with Reciprocation Device



PP-50T / PP-50TL

Straight Flute Tap Grinder

Features:

- I. There are two range of grinding capacity: φ2~32mm & φ5~60mm.
- II. Suitable for straight flute of nut tap (bent shank), spiral point tap, hand tap and pipe tap.

SPECIFICATIONS

| Model No. | PP-50T | PP-50TL |
|-----------------------------------|---|-------------------|
| Grinding Capacity | φ2mm~φ32mm | φ5mm~φ60mm |
| Longitudinal Travel of Table | 230mm | 230mm |
| Horizontal Travel of Table | 180mm | 180mm |
| Working Table Area | 620x190mm | 620x190mm |
| Vertical Adjustment of Wheel Head | 120mm | 120mm |
| Rotating Angle of Wheel Head | 360°(A-axis+dual C-axis) | |
| Size of Wheel | 180x19x31.75mm 145x15x31.75mm / 175x15x31.75mm | |
| Grinding Spindle Speed | 50HZ 2900 rpm 60HZ 3500 rpm | |
| Horse Power | 3/4HP (560W) | |
| Net Weight / Gross Weight | 284 kgs / 350 kgs | 310 kgs / 376 kgs |
| Packing Size (LxWxH) | 105x90x155 cm | 105x90x155 cm |

Standard Accessories:

1. PP-50T: Grinding Attachment for Straight Flute Tap (φ2mm~φ32mm)-1 SET
- PP-50TL: Grinding Attachment for Straight Flute Tap (φ5mm~φ60mm)-1 SET
2. Grinding Wheel (Type:12A)-1 PC
3. CBN Electroplated Grinding Wheel (Type:12AR)-1 PC

4. Grinding Wheel Flange-2 SETS
5. Flange Wrench-1 PC
6. Index Plate (3.4.5 Flutes)-1 PC
7. Cooling System-1 SET
8. Work Light-1 SET
9. Tools for General Use-1 SET
10. Work Cabinet-1 SET

Optional Accessories:

1. SDC Electroplated Grinding Wheel
2. CBN Electroplated Grinding Wheel
3. X-axis Speed Control Motor with Reciprocation Device



PP-80SF

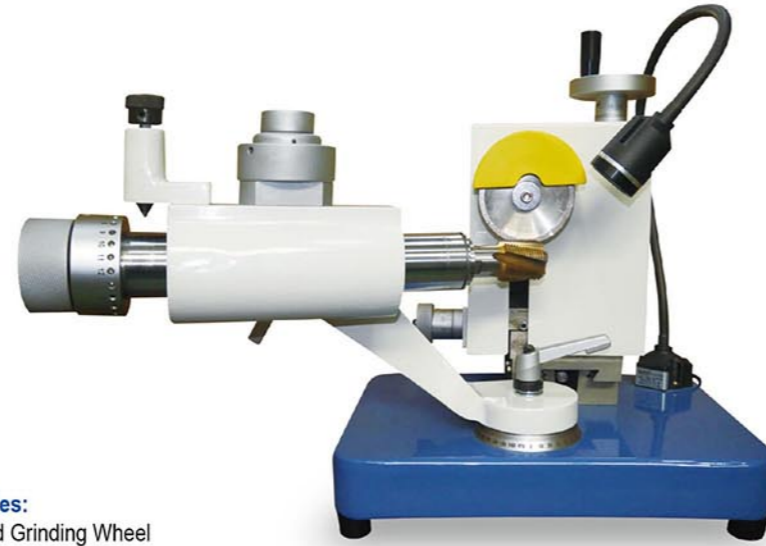
Spiral Flute/ Helical Tool FAST Grinder

Features:

Specially for grinding 2, 3, 4, 6 flutes spiral flute and helix angle cutting tools.
Grind smoothly and precisely.

SPECIFICATIONS

| Model No. | PP-80SF |
|-----------------------------------|--|
| Max. Clamping Diameter | φ25 mm |
| Length of Spiral Flute | 70 mm (Non-standard size can be customized) |
| Horizontal Travel of Table | 20 mm |
| Longitudinal Travel of Table | 20 mm |
| Vertical Adjustment of Wheel Head | 20 mm |
| Net Weight / Gross Weight | 35 kgs / 45 kgs |
| Packing Size (LxWxH) | 60x40x40 cm |



Standard Accessories:

1. Diamond Grinding Wheel-1 PC
2. 5C Collets-7 PCS (6,8,10,12,16,20,25mm)
3. LED Work Light-1 SET
4. Tools for General Use-1 SET

Optional Accessories:

1. SDC Electroplated Grinding Wheel
2. CBN Electroplated Grinding Wheel
3. Work Cabinet

PP-U2

Universal Cutter Grinder

Features:

- The index head is universal: It can set the taper angle and relief angle. Rotate 360° and 180°. It can grind round, half round, taper angle and right angle of engraving tools.
- It is provided at 24 positions so that any particular angle or shape can be obtained.
- There are special grinding attachments for flutes of end mill, drill and turning tool.

SPECIFICATIONS

| Model No. | PP-U2 |
|---------------------------|-----------------|
| Max. Collet Capacity | 18 mm |
| Max. Grinding Dimension | 25 mm |
| Taper Angle | 0°~180° |
| Relief Angle | 0°~45° |
| Negative Taper Angle | 0°~26° |
| Size of Wheel | 100x50x20 mm |
| Grinding Spindle Speed | 3600 rpm |
| Horse Power | 1/3HP (250W) |
| Net Weight / Gross Weight | 32 kgs / 42 kgs |
| Packing Size (LxWxH) | 55x45x47 cm |

Standard Accessories:

1. Diamond Dresser-1 PC
2. Grinding Wheel (Type:6A)-1 PC
3. Grinding Wheel Flange-1 SET
4. U2 Collets-5 PCS (4,6,8,10,12mm)
5. Aligning Finger-1 PC
6. Drive Belt-1 SET
7. Lock Pin-1 SET
8. Tools-1 SET
9. Work Light-1 SET

Optional Accessories:

1. Grinding Attachment for φ20 & φ25mm
2. Microscope
3. Grinding Wheel Balancing Stand
4. PP-U2 Collets- 1, 2, 2.5, 3, 5, 7, 9, 18, 20, 25mm and 1/8", 1/4", 5/16", 3/8", 1/2", 5/8"
5. Electroplated Grinding Wheel
6. Work Cabinet



PP-25

Precision End Mill Grinder

Features:

Specially designed for grinding end cutting edge, relief (chip space), end gash and peripheral cutting edge. Just set up once.

SPECIFICATIONS

| Model No. | PP-25 |
|------------------------------|--------------------------------|
| Grinding Capacity | φ3 mm~φ25 mm |
| Longitudinal Travel of Table | 50 mm |
| Horizontal Travel of Table | 50 mm |
| Size of Wheel | 125x50x31.75 mm |
| Grinding Spindle Speed | 50HZ 2900 rpm 60HZ 3500 rpm |
| Horse Power | 1/2HP (375W) |
| Net Weight / Gross Weight | 50 kgs / 82 kgs |
| Packing Size (LxWxH) | 80x65x68 cm |

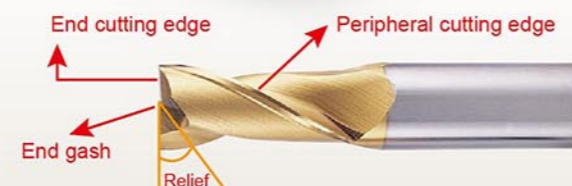


Standard Accessories:

1. Grinding Wheel (Type:11A)-1 PC
2. Grinding Wheel Flange-1 SET
3. Flange Wrench-1 PC
4. 5C Collet-7 PCS (6,8,10,12,16,20,25mm)
5. Work Light-1 SET
6. Tools for General Use-1 SET

Optional Accessories:

1. SDC Electroplated Grinding Wheel
2. CBN Electroplated Grinding Wheel
3. 5C Collet (Min.3mm~ Max.25mm)
4. Work Cabinet



PP-26/PP-26 L

Rotary Cutting-off & Grinding Machine

Features:

- Suitable for the tungsten carbide and high speed steel work piece.
- Adopt keyless centering chuck.
- Rotary cutting-off, no heat and steady stiffness.
- Cutting-off and grinding in one machine.

SPECIFICATIONS

| Model No. | PP-26 | PP-26L |
|---------------------------|--------------------------------|--------|
| Max. Grinding Capacity | 25 mm | |
| Scale | 300L | 600L |
| Size of Cutting-off Wheel | 180x1x31.75 mm | |
| Size of Grinding Wheel | 100x50x20 mm | |
| Grinding Spindle Speed | 50HZ 2900 rpm 60HZ 3500 rpm | |
| Horse Power | 1HP (750W) | |
| Net Weight / Gross Weight | 95 kgs / 122 kgs | |
| Packing Size (LxWxH) | 59x56x67 cm | |

Standard Accessories:

1. Grinding Wheel (Type:6A)-1 PC
2. General Cutting-off Wheel-1 PC
3. Chuck Handle-1 PC

Optional Accessories:

1. Grinding Wheel
2. SDC Electroplated Grinding Wheel
3. CBN Electroplated Grinding Wheel
4. SDC Cutting-off Wheel
5. CBN Cutting-off Wheel



PP-125

Turning Tool Grinder

Features:

- I. Suitable for various types of turning tool.
- II. Wheel rotation is reversible. Allows for right or left hand grinding.

SPECIFICATIONS

| Model No. | PP-125 |
|---------------------------|-----------------|
| Point Angle of Tool | 90°~180° |
| Back Rake Angle of Tool | 0°~15° |
| Size of Wheel | 125x8x31.75 mm |
| Speed of Wheel | 3420 rpm |
| Horse Power | 1/3HP (250W) |
| Net Weight / Gross Weight | 33 kgs / 35 kgs |
| Packing Size (LxWxH) | 50x40x40 cm |

Standard Accessories:

1. SDC Resinoid Grinding Wheel (12Y9C)-1 PC
2. Work Light-1 SET

Optional Accessories:

1. SDC Resinoid Grinding Wheel
2. CBN Resinoid Grinding Wheel



Precision Drill Grinder

Cutting-Off Machine



Precision Drill Grinder

| Model No. | PP-13A | PP-20X |
|------------------------|-------------------|-----------------|
| Grinding Capacity | φ 2.5 mm~ φ 13 mm | φ 3 mm~ φ 20 mm |
| Grinding Spindle Speed | 4600 rpm | 4300 rpm |
| Weight | 10 kgs | 19 kgs |
| Packing Size | 30.5x17.2x18 cm | 43x22x22 cm |



Sheet Metal Drill Grinder

| Model No. | PP-13SX |
|------------------------|-----------------|
| Grinding Capacity | φ 2 mm~ φ 13 mm |
| Grinding Spindle Speed | 4300 rpm |
| Weight | 11 kgs |
| Packing Size | 34x18.5x21 cm |



Sheet Metal drill



Precision Drill Grinder

| Model No. | PP-26X | PP-32X |
|------------------------|------------------|------------------|
| Grinding Capacity | φ 12 mm~ φ 26 mm | φ 12 mm~ φ 32 mm |
| Grinding Spindle Speed | 3700 rpm | 3700 rpm |
| Weight | 29 kgs | 32 kgs |
| Packing Size | 47x26x23.5 cm | 47x26x23.5 cm |



X-type (SG type) Drill Grinder

| Model No. | PP-13X |
|------------------------|-----------------|
| Grinding Capacity | φ 3 mm~ φ 13 mm |
| Grinding Spindle Speed | 5500 rpm |
| Weight | 10 kgs |
| Packing Size | 34x19.5x21 cm |



X-type drill

PP-400

Auto Saw Blade Grinder

Features:

- I. Suitable for HSS circular saw blade.
- II. Fast grinding and simple operation.

SPECIFICATIONS

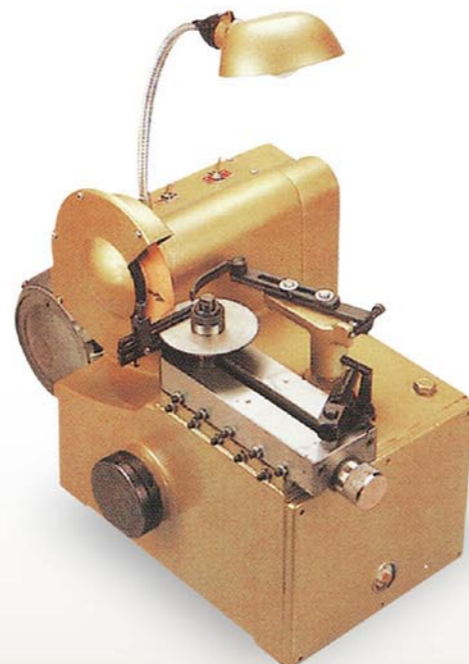
| Model No. | PP-400 |
|---------------------------|--------------------|
| Grinding Capacity | φ 20 mm~ φ 400 mm |
| Size of Wheel | 150x7x50Vx19.05 mm |
| Speed of Wheel | 4000 rpm |
| Horse Power | 1/4HP (185W) |
| Net Weight / Gross Weight | 46 kgs / 58 kgs |
| Packing Size (LxWxH) | 81x38x50 cm |

Standard Accessories:

1. Grinding Wheel-1 PC
2. Diamond Dresser-1 PC

Optional Accessories:

1. Grinding Wheel
2. SDC Electroplated Grinding Wheel
3. CBN Electroplated Grinding Wheel



Features:

- I. UG Drill Type - Promote the working efficiency
- II. Choose optional attachment to modify original drill into SG drill

Super Drill Grinder

| Model No. | PP-13AM | PP-20XM |
|------------------------|-----------------|-----------------|
| Grinding Capacity | φ 2 mm~ φ 13 mm | φ 2 mm~ φ 20 mm |
| Grinding Spindle Speed | 6200 rpm | 6200 rpm |
| Weight | 22.5 kgs | 23.5 kgs |
| Packing Size | 45x29x40 cm | 45x29x40 cm |



Cutting-off Machine

| Model No. | PP-16C |
|------------------------|-----------------|
| Grinding Capacity | φ 3 mm~ φ 16 mm |
| Grinding Spindle Speed | 6000 rpm |
| Weight | 13.5 kgs |
| Packing Size | 34x21x21 cm |

➤ Precision End Mill Grinder
➤ Combination Drill & End Mill Grinder



Precision End Mill Grinder (Wag Grinding)

| Model No. | PP-12D |
|------------------------|-----------------|
| Grinding Capacity | φ 4 mm~ φ 12 mm |
| Grinding Spindle Speed | 5300 rpm |
| Weight | 9 kgs |
| Packing Size | 33x18x18 cm |



Fast End Mill Grinder

| Model No. | PP-20D |
|------------------------|-----------------|
| Grinding Capacity | φ 6 mm~ φ 20 mm |
| Grinding Spindle Speed | 6200 rpm |
| Weight | 13.5 kgs |
| Packing Size | 39x29x24 cm |

➤ PP-12DM / PP-20DM
Super End Mill Grinder



Features:

- I. Re-sharpen the end mill PLUS 2 additional functions you could choose from: Cutting-off/ Neck Reduction+Side Lock/ Edge Honing/ Corner Radius.
- II. Same machine to upgrade, Add the Expansion Kit.

SPECIFICATIONS

| Model No. | PP-12DM | PP-20DM |
|------------------------|-----------------|-----------------|
| Grinding Capacity | φ 6 mm~ φ 12 mm | φ 6 mm~ φ 20 mm |
| Grinding Spindle Speed | 6200 rpm | 6200 rpm |
| Weight | 25.5 kgs | 26.5 kgs |
| Packing Size | 45x29x40 cm | 45x29x40 cm |

➤ PP-213CM / PP-220CM
Combination Drill & End Mill Grinder



Features:

- I. Two functions in one machine, Grinding Drill & End Mill.
- II. Same machine to upgrade, Add the Expansion Kit.

SPECIFICATIONS

| Model No. | PP-213CM | PP-220CM |
|------------------------|--------------------------|--------------------------|
| Grinding Capacity | Drill φ 2 mm~ φ 13 mm | Drill φ 2 mm~ φ 20 mm |
| | End Mill φ 6 mm~ φ 12 mm | End Mill φ 6 mm~ φ 20 mm |
| Grinding Spindle Speed | 6200 rpm | 6200 rpm |
| Weight | 23 kgs | 25 kgs |
| Packing Size | 45x29x40 cm | 45x29x40 cm |

➤ PP-DM
Diamond & PCBN Tool Grinder

Features:

The machine is mainly used for grinding PCD, PCBN, CBN and carbide tools. You can position the tool precisely and make sure the position by CCD and monitor. The CCD is for checking the surface of tools and measure the tools. Remark: For the diamond/ PCD form tools, we could offer customized service.

SPECIFICATIONS

| Model No. | PP-DM |
|---|-------------------|
| Longitudinal Travel of Cross Work Table | 70 mm |
| Horizontal Travel of Cross Work Table | 65 mm |
| Spindle Center Height | 150 mm |
| Variable Swing Distance | 0-15 mm |
| Variable Swing Speed | 0-60 Hz/min. |
| Variable Swing Position | 250 mm |
| Variable Spindle Angle | -5°~25°±10° |
| Size of Wheel | 150x40x40 mm |
| Grinding Spindle Speed | 0-3000 rpm |
| Voltage | 220V |
| Net Weight / Gross Weight | 350 kgs / 424 kgs |
| Packing Size (LxWxH) | 104x104x195 cm |

Standard Accessories:

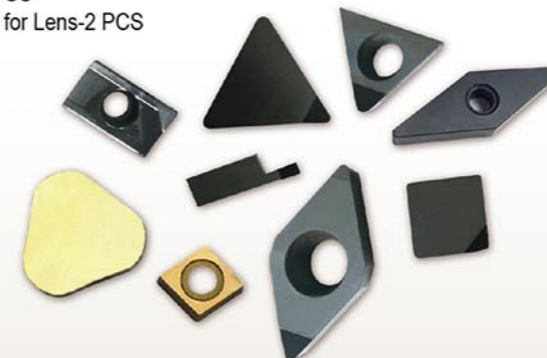
1. Vitrified Diamond Grinding Wheel-1 PC
2. Grinding Wheel Flange-1 SET
3. Flange Wrench-1 PC
4. Work Light-1 SET
5. Cooling System-1 SET
6. CCD & Monitor-1 SET
7. Rock Type Lubricator-1 SET
8. Variable Frequency Drive-2 SETS
9. Tools for General Use-1 SET

Optional Accessories:

1. Vitrified Diamond Grinding Wheel
2. Vitrified Diamond Grinding Wheel (Made in Japan)
3. Grinding Wheel Flange
4. Oil Stone
5. Auto Lubricator
6. Hollow Rotary Reducer
7. Human Machine Interface
8. Measurement Software for CCD
9. Full Guard

Tools for General Use:

1. Hexagon Wrench-10 PCS
2. Screwdriver-1 PC
3. T-Type Wrench-1 PC
4. Open Wrench-4 PCS
5. Hexagon Wrench for Lens-2 PCS



PP-A1

Precision Spindle Polishing Machine

Features:

- I. Automatic spindle polishing control.
- II. Keep the precision of spindle and no damage to spindle body.
- III. One setting for the maximum convenience of operation.

After Use:

- I. Extend the life of cutting tools.
- II. Increase the workpiece accuracy.
- III. Reduce the spindle vibration and extend the life of spindle.

SPECIFICATIONS

| Model No. | PP-A1 |
|---------------------------|---------------------------|
| Taper Type of Spindle | BT Series |
| Speed of Spindle | 30000 rpm |
| Voltage | 100V / 110V / 220V / 240V |
| Net Weight / Gross Weight | 11 kgs / 12 kgs |
| Packing Size (LxWxH) | 36x27x45 cm |

Standard Accessories:

1. Grinding Wheel- for Polishing 2 PCS
2. Grinding Wheel- for Grease Dirt 2 PCS
3. Grinding Wheel- for Rust 2 PCS
4. Transformer-1 SET
5. 6mm Chuck-1 PC
6. Chuck Wrench-1 PC

Optional Accessories:

1. Grinding Wheel- for Polishing
2. Grinding Wheel- for Grease Dirt
3. Grinding Wheel- for Rust



Optional Accessories



MTOR-AC
•Auto cycle motor



WKL-LED
•LED Work light



WKL-HL
•Halogen work light



LINSC-S/M
•Linear scale+DRO



CCD
•CCD



WKCB
•Work cabinet



YC-602
•Dust collection



T-INDEX
•Teeth index device



PP-CLM
•Cooling system



LBS
•Level balancing stand



WBS
•Wheel balancing stand



LBS-ARB
•Arbor for balancing stand

PP-A2

Tool Holder Maintenance & Polish Machine

Features:

- I. Extend tool holder life.
- II. Increase tool holder accuracy.
- III. Polish & clean the grease and dirt on holder.
- IV. One setting for the maximum convenience of operation.

Standard Accessories:

1. Abrasive Paper-3 PCS
2. Hexagon Wrench-1 PC

Optional Accessories:

1. Abrasive Paper



SPECIFICATIONS

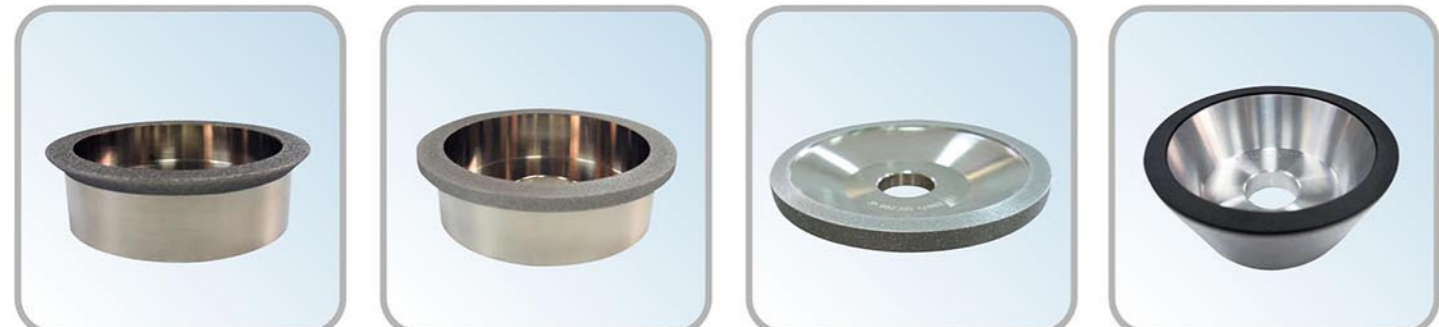
| Model No. | PP-A2 |
|------------------------------|--------------------|
| Specification of Tool Holder | BT30 / BT40 / BT50 |
| Voltage | 110V / 220V |
| Net Weight / Gross Weight | 25 kgs / 27 kgs |
| Packing Size (LxWxH) | 40x40x48 cm |



Accessories for machine



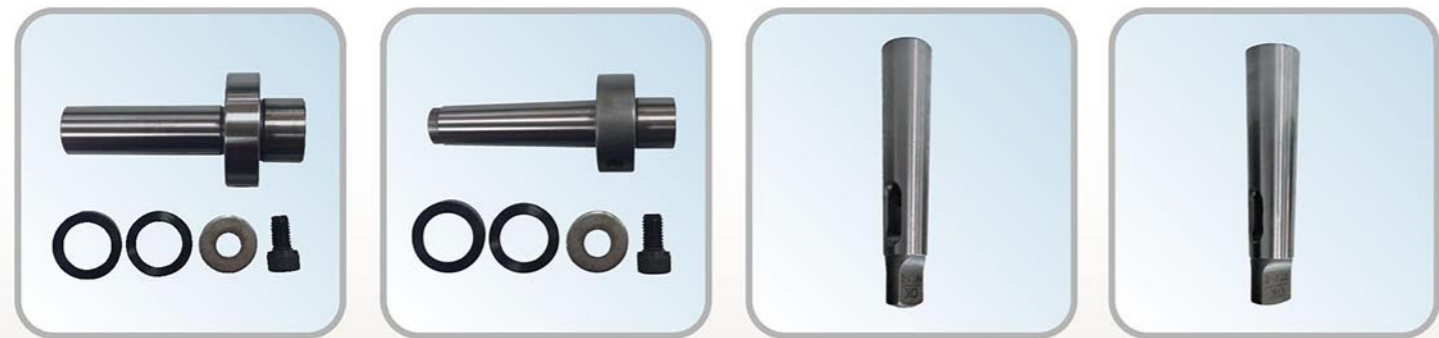
GW-05A • Grinding wheel-5A
GW-06A • Grinding wheel-6A
GW-11A • Grinding wheel-11A
GW-12A • Grinding wheel-12A



GW-6A245V-WO-SDC/CBN • Electroplated grinding Wheel-6A245V
GW-6A290V-WO-SDC/CBN • Electroplated grinding Wheel-6A290V
GW-11A2-WO-SDC/CBN • Electroplated grinding Wheel-11A2
GW-11A2-RD-SDC/CBN • Resinoid grinding Wheel-11A2

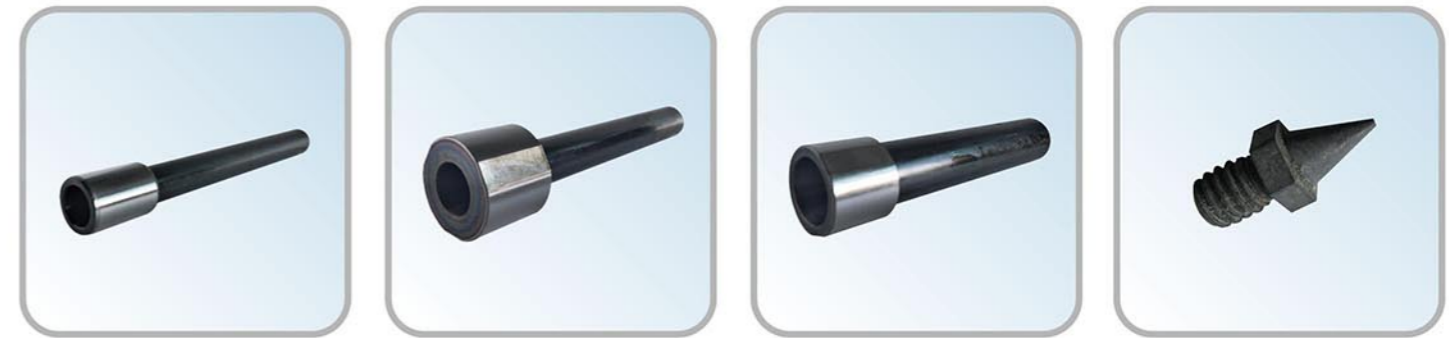


GW-DR • Diamond dresser
GWFL • Grinding wheel flange
GWFL-WR • Flange wrench
GWFL-SC • Screw for grinding wheel flange

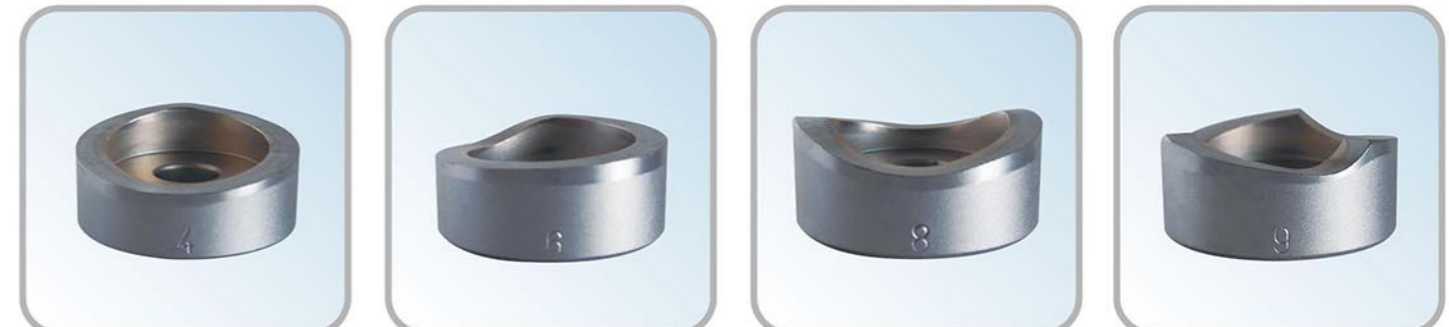


SHAFT-S • 25.4/31.75 Shaft (Straight shank)
SHAFT-T • 25.4/31.75 Shaft (Taper shank)
MOSTP-01 • Morse taper sleeve-NO.1
MOSTP-02 • Morse taper sleeve-NO.2

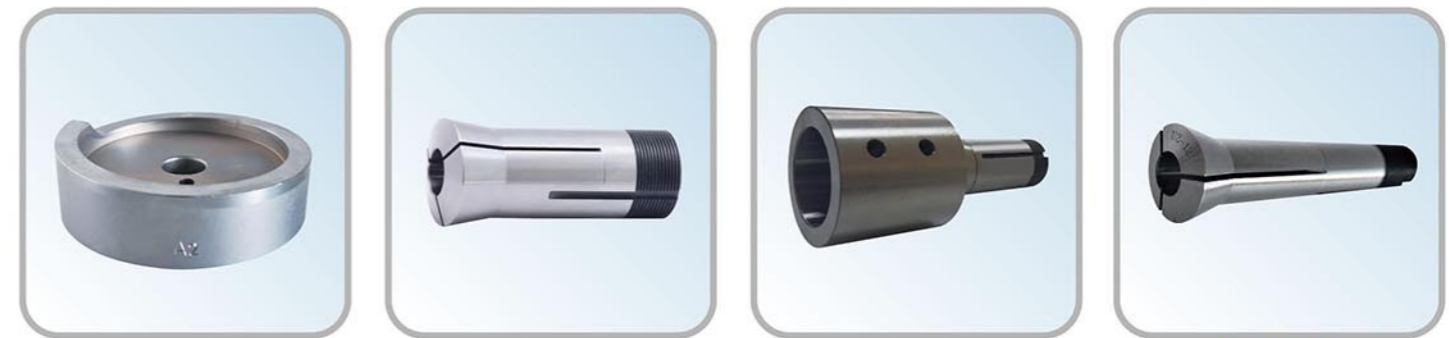
Accessories for machine



MOSTP-03 • Morse taper sleeve-NO.3
MOSTP-04 • Morse taper sleeve-NO.4
MOSTP-05 • Morse taper sleeve-NO.5
TL-SCRIP • Screw pin



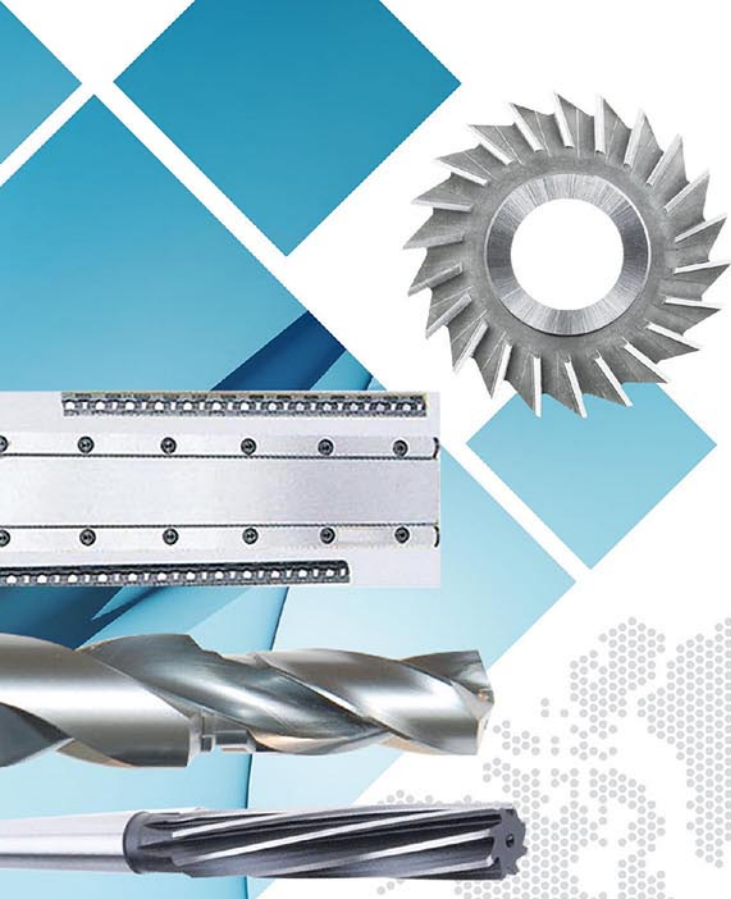
CAM-04 • Cam-NO.4
CAM-06 • Cam-NO.6
CAM-08 • Cam-NO.8
CAM-09 • Cam-NO.9



CAM-A2 • Cam-NO.A2
CL-5C • 5C collet (3-25mm)
CL-5CSP • 5C Special collet (32mm/42mm)
CL-U2 • PP-U2 collet (1/8, 1/4, 5/16, 3/8, 1/2, 5/8)



CL-ER • ER collet (ER20:1-13mm / ER25:1-16mm / ER40:3-26mm)
CL-ST • ST collet (ST32)
CL-STER • ST/ER Straight collet chuck system
TL-BX • Tools for General Use
 1. Diamond dresser-1 pc
 2. Hexagon key-10 pcs(1set)
 3. Oil bottle-1 pc
 4. Screwdriver-1 pc
 5. Open wrench-1 pc



www.pei-ping.com
Expert on Tool & Cutter Grinders



SINCE 1980

PEIPING PRECISION ENTERPRISE CO., LTD.

No.71, 32nd Rd., Taichung Industrial Park, Xitun Dist.,
Taichung City 407, Taiwan

Tel: +886-4-2358-9088 Fax: +886-4-2358-9098 **LINE ID** @peiping
E-mail: service@pei-ping.com <http://www.pei-ping.com>



WEB



* Additional fees for being equipped with **CE**
* Specifications subject to change without notice.